

Stackable and Reuseable Storage Containers



Maximize your storage capacity with Attached Lid Containers (ALCs). Our ALCs are designed for reusability, allowing them to be stacked when full and nested when empty. Featuring textured bottoms for enhanced grip on conveyor belts and molded-in handles for a secure and ergonomic grip, these containers ensure practicality and convenience. The attached lids snap together to keep your contents clean from dirt, dust, and debris.

Store it with Attached Lid Containers

Features:

- Stackable when closed, and nestable when open and empty.
- Attached lids snap together when closed to protect contents from dirt, debris, and damage.
- Containers interwork for easy pallet loading.
- Available in multiple colors and sizes.

Move it.

Store it.

Organize it.

Attached Lid Containers Distribution and Storage Boxes

Reusable, stackable when closed, and nestable when open and empty

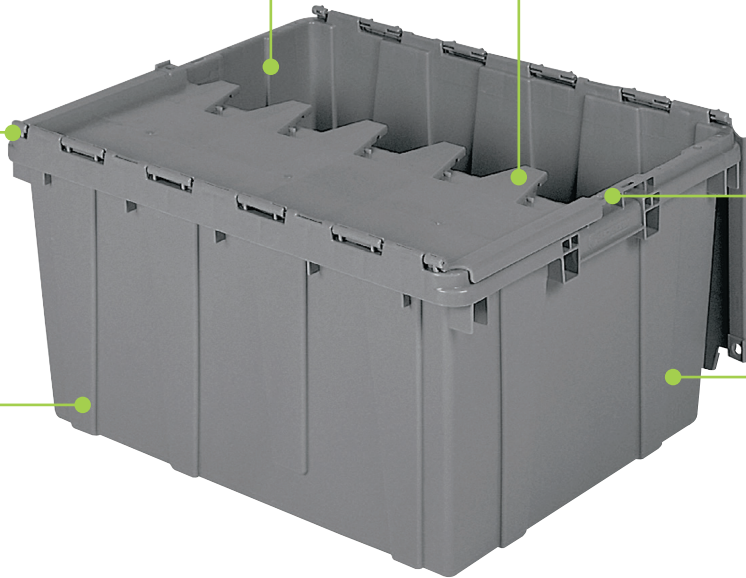
Attached lids snap together when closed to protect contents from dirt, debris, and damage

Reinforced steel hinge pins to guarantee years of smooth lid operation

Secure items with a padlock eye

Containers interwork for easy pallet loading

Available in multiple colors and sizes



More Attached Lid Containers

Explore a wide range of sizes and designs to meet your distribution and storage needs.



39085
1.12 ft³, 35 lbs. Capacity



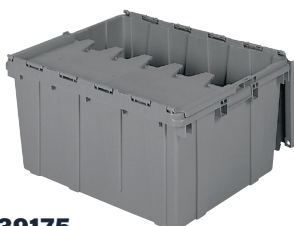
39120
1.62 ft³, 65 lbs. Capacity



39160
2.25 ft³, 100 lbs. Capacity



39170
2.28 ft³, 100 lbs. Capacity



39175
2.3 ft³, 80 lbs. Capacity



39280
3.82 ft³, 100 lbs. Capacity

For Detailed Specifications of all Attached Lid Containers:

akro-mils.com/Products/Types/Plastic-Storage-Containers/ALC.html



Contact Us Today
800.253.2467

inquiry@akro-mils.com
akro-mils.com