



## In-Stock Product Catalog

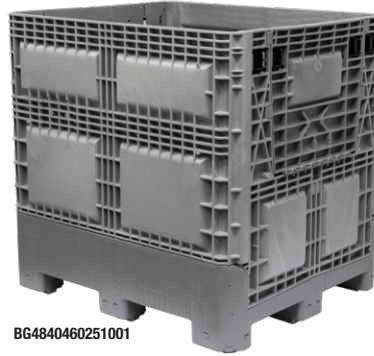




# Bulk Containers - Collapsible & Fixed Wall

## BG Model General Purpose Containers

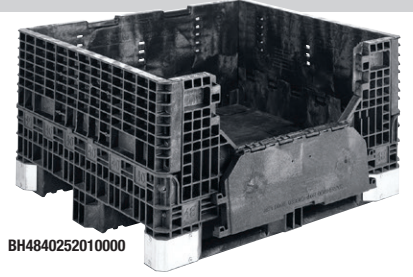
- Rated for load capacities up to 1,200 lbs.
- Locking latches secure panels and doors
- 9 feet or 5 plastic runners
- Plastic runners for added stacking strength
- Backed by a one-year limited warranty
- 100% recyclable HDPE



BG4840460251001

## BH Model Heavy-Duty Containers

- Rated for load capacities up to 2,500 lbs.
- Reinforced base with 3 steel runners for durability
- Post-and-pocket side panels interlock for strength
- Steel corner hit plates deflect fork tines
- Backed by a one-year limited warranty
- 100% recyclable HDPE



BH4840252010000

## BI Model Industry Standard Containers

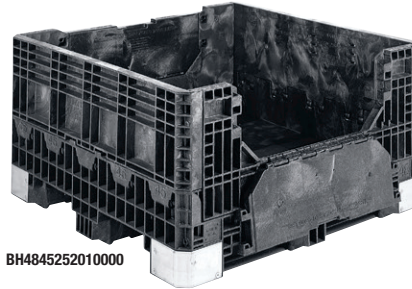
- Rated for load capacities up to 1,600 lbs.
- Locking latches for sidewalls and drop doors
- Backed by a one-year limited warranty
- 100% recyclable HDPE



BI4840392010000

## BN Industry Standard Containers

- Rated for load capacities up to 1,800 lbs.
- Plastic runners for added stacking strength
- Backed by a one-year limited warranty
- 100% recyclable HDPE



BN4845252010000



BN4845342010000

## BN Extra-Duty Boxes

- Rated for load capacities up to 2,500 lbs.
- Backed by a one-year limited warranty
- 100% recyclable HDPE

## BS Extended Length Containers

- Rated for load capacities up to 2,000 lbs.
- Spring action latches on doors and sidewalls provide quick assembly, knock down and access to contents
- No hinge pins - walls snap in place and remove quickly for replacement
- Non-sequential folding allows quick collapsibility and prevents walls from bowing when collapsed
- Backed by a one-year limited warranty
- 100% recyclable HDPE



BN4845342023000



BF4844290010000  
(solid sides)

## BF Model Containers

- Solid, one-piece base for maximum strength and durability
- Automation friendly
- Withstands exposure to sunlight and cooling processes
- Resists impact and moisture
- Designed with rounded rims and corners – easy to keep clean
- Will not rust, peel or splinter, rot or absorb odors
- Backed by a one-year limited warranty
- 100% recyclable HDPE



BF4229280010000  
(solid sides)

# Bulk Containers - Collapsible & Fixed Wall

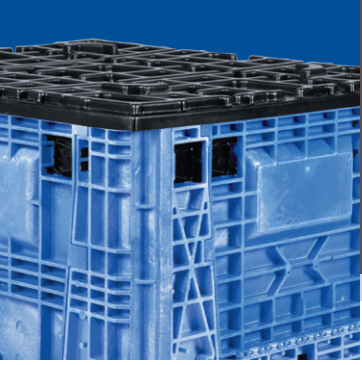
800.253.2467  
akro-mils.com

Bulk Containers - Collapsible				External Dimensions (In.)			Internal Dimensions (In.)			Capacity				Fork Tunnel Dimensions				Truck Capacity		
Model No.	Description	Color	Doors	L	W	H	L	W	H	Weight lbs.	Lbs.	Vol. Cu. Ft.	Vol. Gal.	Long Side L	Long Side H	Short Side L	Short Side H	Return Ratio	53' Truck Opened	53' Truck Collapsed
<b>BG4840332063002</b>	General Purpose 48" x 40" x 33" 5-Rail Base Bulk Box	Blue	2 Doors on Length	48	40	34.5	45	37	27	129	1200	28.3	212	13	4	12	4	2.7:1	90	210
<b>BG4840460251001</b>	General Purpose 48" x 40" x 46" 9 Feet Base Bulk Box	Lt. Gray	2 Doors on Width	48	40	46	45	37	40	142	1200	38.5	288	13	3.5	12	3.5	3.6:1	60	240
<b>BG4840460263000</b>	General Purpose 48" x 40" x 46" 9 Feet Base Bulk Box	Blue	2 Doors on Width	48	40	46	45	37	40	142	1200	38.5	288	13	3.5	12	3.5	3.6:1	60	240
<b>BH4840252010000</b>	Heavy-Duty 48" x 40" x 25" Bulk Box	Black	2 Doors on Length	47.62	39.75	25.50	44	36.25	18.25	121	2500	16.85	126	11.75	3.16	10.38	4.13	2.1:1	120	240
<b>BH4840342010000</b>	Heavy-Duty 48" x 40" x 34" Bulk Box	Black	2 Doors on Length	47.62	39.75	33.87	44	36.25	26.50	141.2	2500	24.46	183	11.75	3.16	10.38	4.13	3:1	90	242
<b>BH4845252010000</b>	Heavy-Duty 48" x 45" x 25" Bulk Box	Black	2 Doors on Length	47.62	44.62	25.62	44.25	41.25	18.69	140	2500	19.74	148	11.88	3.25	10.5	3.69	2.1:1	112	224
<b>BH4845342010000</b>	Heavy-Duty 48" x 45" x 34" Bulk Box	Black	2 Doors on Length	47.62	44.62	34	44.25	41.25	27.12	163	2500	28.65	214	11.88	3.25	10.5	3.69	3:1	84	224
<b>BI4840342010000*</b>	Industry Standard 48" x 40" x 34" Bulk Box	Black	2 Doors on Length	47.5	39.5	34.1	44.3	36.2	27.3	120	1600	24.7	185	13.1	4.0	11.1	4	2.3:1	90	210
<b>BI4840392010000</b>	Industry Standard 48" x 40" x 39" Bulk Box	Black	2 Doors on Length	47.5	39.5	39.5	44.3	36.2	32.1	137	1600	29.8	223	13.1	4.0	11.1	4	2.6:1	60	210
<b>BN3230252010000</b>	Industry Standard 32" x 30" x 25" Bulk Box	Black	2 Doors on Length	32	30	25	29.5	27.5	18.4	63	1800	8.6	64.3	10.6	3.5	7.6	2	1.9:1	240	480
<b>BN3230342010000</b>	Industry Standard 32" x 30" x 34" Bulk Box	Black	2 Doors on Length	32	30	34	29.5	27.5	27.4	76	1800	12.9	96.5	10.6	3.5	7.6	2	2.6:1	180	480
<b>BN4845252010000</b>	Extra-Duty 48" x 45" x 25" Bulk Box	Black	2 Doors on Length	48	45	25	44.5	41.5	18.3	100	2500	19.1	143	31.8	10.3	12.3	3.3	2.3:1	104	208
<b>BN4845342010000</b>	Extra-Duty 48" x 45" x 34" Bulk Box	Black	2 Doors on Length	48	45	34	44.5	41.5	27	122	2500	28.7	215	11	3.3	12.3	3.3	3:1	78	234
<b>BN4845342023000</b>	Extra-Duty 48" x 45" x 34" Bulk Box	Blue	2 Doors on Length	48	45	34	44.5	41.5	27	122	2500	28.7	215	11	3.3	12.3	3.3	3:1	78	234
<b>BN4845412010000</b>	Extra-Duty 48" x 45" x 41" Bulk Box	Black	2 Doors on Length	48	45	41	44.5	41.5	34	147	2000	36.3	271	11	3.3	12.3	3.3	2.1:1	52	130
<b>BN4845442010000</b>	Extra-Duty 48" x 45" x 44" Bulk Box	Black	2 Doors on Length	48	45	44	44.5	41.5	37	154	2000	39.5	295	11	3.3	12.3	3.3	2.1:1	52	104
<b>BN4845512010000</b>	Extra-Duty 48" x 45" x 51" Bulk Box	Black	2 Doors on Length	48	45	51	44.5	41.5	44	179	2000	47	351	11	3.3	12.3	3.3	1.7:1	52	78
<b>BS6448340210002</b>	Extended Length 64.5" x 48" x 34" Bulk Box	Black	2 Doors on Width	64.5	48	34	60.8	44.5	26.6	183	2000	41.7	312	10.2	3.2	10.8	3.2	2.5:1	57	152

\*Minimum quantities apply, call for details.

Bulk Containers - Fixed Wall				External Dimensions (In.)			Internal Dimensions (In.)			Capacity				Fork Tunnel Dimensions				Truck Capacity		
Model No.	Description	Color	Doors	L	W	H	L	W	H	Weight lbs.	Lbs.	Vol. Cu. Ft.	Vol. Gal.	Long Side L	Long Side H	Short Side L	Short Side H	Return Ratio	53' Truck Opened	53' Truck Collapsed
<b>BF4229280010000*</b>	Stack Only Agricultural Container	Black	0 Doors	41.8	28.8	27.8	38.5	25.5	22.3	74	900	13.8	103.3	10.5	3.9	—	—	1:1	132	—
<b>BF4229280051000*</b>	Stack Only Agricultural Container	Light Gray	0 Doors	41.8	28.8	27.8	38.5	25.5	22.3	74	900	13.8	103.3	10.5	3.9	—	—	1:1	132	—
<b>BF4844290010000</b>	Stack Only Agricultural Container	Black	0 Doors	47.9	43.8	29.4	45.4	41.4	23.4	95	700	25.9	185.2	11.7	3.1	11.7	4.3	1:1	84	—
<b>BF4844290051000*</b>	Stack Only Agricultural Container	Light Gray	0 Doors	47.9	43.8	29.4	45.4	41.4	23.4	95	700	25.9	185.2	11.7	3.1	11.7	4.3	1:1	84	—

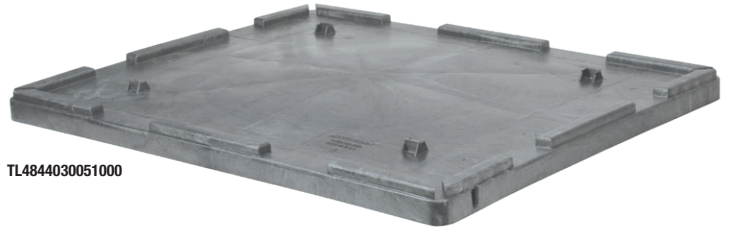
\*Minimum quantities apply, call for details.



# Bulk Container Lids



TH4845020010000



TL4844030051000



TL4229040010000



TS4845030010000

Bulk Container Lids			Outside Dimensions (In.)			Weight lbs.	Container Compatibility
Model No.	Description	Color	L	W	H		
TH4840020010000	Structural Foam Lid	Black	48.4	40.4	2.1	18.6	Fits BH4840 Series
TH4845020010000	Structural Foam Lid	Black	48.25	45.25	2.25	20.7	Fits BH4845 Series
TL4229040010000*	Structural Foam Lid	Black	42.5	29.7	3.2	15.3	Fits BF4229
TL4229040051000*	Structural Foam Lid	Light Gray	42.5	29.7	3.2	15.3	Fits BF4229
TL4840030010000	Structural Foam Lid	Black	47.8	40.0	2.8	19.1	Fits BI4840
TL4844030010000*	Structural Foam Lid	Black	48.9	44.8	2.8	20.9	Fits BF4844
TL4844030051000*	Structural Foam Lid	Light Gray	48.9	44.8	2.8	20.9	Fits BF4844
TS3230020010000	Structural Foam Lid	Black	32.75	30.75	2.3	10.3	Fits BS3230 Series
TS4840020010000	Structural Foam Lid	Black	49.1	41.1	2.5	21.8	Fits BG4840 Series with Runners
TS4845030010000	Structural Foam Lid	Black	49.8	46.8	3.8	25	Fits BE4845, BN4845 and BX4845 Series

\*Minimum quantities apply, call for details.

# Straight Wall Containers

800.253.2467  
akro-mils.com

- Stack-only modular containers
- Ideal for closed loop shipping, in-process handling and storage applications
- Containers cube 48' x 45' pallets
- Interworking sizes allow mixed stacking on pallet
- Manufactured from FDA-compliant materials
- Model Numbers with F1 have been reworked with the following design changes:
  - Larger, more ergonomically friendly handles
  - Fingertip handles on other two sides
  - Lower tare weight
  - Perimeter dust skirts
  - Designed to work with the PN4845 pallet and the TN4845 top cap



SW120705F101000



SW241504A201000



TOP SELLER

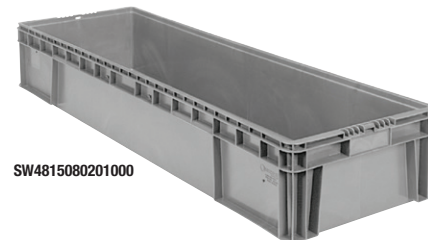
SW241509F101000



SW241514F101000



SW242211F101000



SW4815080201000



SL1512010001000



SL2415010001000

Straight Wall Containers			Outside Dimensions (In.)			Bottom Dimensions (In.)			Truck Capacity			Accessories
Model No.	Description	Color	L	W	H	L	W	H*	Weight lbs.	Volume Cu. Ft.	53' Truck	Lid
SW120705F101000	Solid Bottom/Sides 12" x 7" x 5"	FDA Lt. Gray	12	7	5	9.5	5.6	4.4	1.2	0.1	11,232	-
SW241504A201000	Solid Bottom/Sides 24" x 15" x 4"	FDA Lt. Gray	24	15	4	21.38	13	3.38	2.9	0.5	3,744	SL2415010001000
SW2415060206000	Solid Bottom/Sides 24" x 15" x 5.5"	FDA Dk. Gray	24	15	5.5	21.4	13	4.8	3.7	0.8	2,652	SL2415010001000
SW241507F101000	Solid Bottom/Sides 24" x 15" x 7.5"	FDA Lt. Gray	24	15	7.5	21.5	13.1	6.9	3.7	1.1	1,872	SL2415010001000
SW241509F101000	Solid Bottom/Sides 24" x 15" x 9.5"	FDA Lt. Gray	24	15	9.5	21.5	13.1	8.9	4.3	1.5	1,404	SL2415010001000
SW241514F101000	Solid Bottom/Sides 24" x 15" x 14.5"	FDA Lt. Gray	24	15	14.5	21.5	13.1	13.9	5.5	2.3	936	SL2415010001000
SW242211F101000	Solid Bottom/Sides 24" x 22.5" x 11"	FDA Lt. Gray	24	22.5	11	21.5	20.6	10.4	6	2.7	936	**
SW3215080201000	Solid Bottom/Sides 32" x 15" x 7.5"	FDA Lt. Gray	32	15	7.5	29.38	13	6.88	5.6	1.52	1,248	**
SW4815080201000	Solid Bottom/Sides 48" x 15" x 7.5"	FDA Lt. Gray	48	15	7.5	45.38	13	6.88	7.5	2.4	936	**

\*Usable height. \*\*Lid available, non-stock item; minimum quantities apply.





# Attached Lid Containers : Detached Lid Containers

- Ideal for shipping, picking and storage
- Containers nest when not in use, saving space in trucks and storerooms
- Light Gray Containers manufactured from FDA-compliant materials



Attached Lid Containers			Outside Dimensions (In.)			Bottom Dimensions (In.)						Truck Capacity			
Model No.	Description	Color	L	W	H	L	W	H	Weight lbs.	Weight Capacity lbs.	Volume Cu. Ft.	Nesting Ratio	Lid Type	53' Truck Stacked	53' Truck Nested
AR2012070201000*	ALC Solid/Textured Bottom	FDA Lt. Gray	20	11.69	7.5	16.88	9.63	6.06	3.78	40	0.6	3:1	(R)	3,720	6,480
AC2115090201000	ALC Solid/Textured Bottom	FDA Lt. Gray	21.75	15.25	9.63	18.38	13	8.13	5.1	60	1.22	4.3:1	(R)	1,991	4,872
AC2115120201000	ALC Solid/Textured Bottom	FDA Lt. Gray	21.75	15.25	12.5	17.88	12.5	11.13	5.6	60	1.4	5:1	(R)	1,448	4,176
AR2420120201000	ALC Solid/Smooth Bottom	FDA Lt. Gray	24	19.5	12.63	20.5	16.6	10.8	8.1	80	2.3	5.6:1	(R)	1,000	3,840
AR2717120201000	ALC Solid/Textured Bottom	FDA Lt. Gray	27	16.88	12.5	23.5	13.8	10.9	8.2	100	2.25	4.3:1	(R)	1,072	3,162
AR2717120202000	ALC Solid/Textured Bottom	Red	27	16.88	12.5	23.5	13.8	10.9	8.2	100	2.25	4.3:1	(R)	1,072	3,162
AR2717120204000	ALC Solid/Textured Bottom	Green	27	16.88	12.5	23.5	13.8	10.9	8.2	100	2.25	4.3:1	(R)	1,072	3,162
AR2717120209000	ALC Solid/Textured Bottom	Dk. Blue	27	16.88	12.5	23.5	13.8	10.9	8.2	100	2.25	4.3:1	(R)	1,072	3,162
AS2821150201000*	ALC Solid/Textured Bottom	FDA Lt. Gray	28	20.75	15.44	25	18	14	13.1	100	3.6	2.8:1	(S)	624	1,496
AS3424201201000	ALC Solid/Smooth Bottom; Open Handholds	FDA Lt. Gray	34	24	19.63	29.9	19.5	18.1	19	100	6.1	2.7:1	(S)	390	816

(R) Recessed Lid (S) Strapping Lid \*Minimum quantities and extended lead times, call for details.

## Detached Lid Containers

- Containers stack firmly with lids, nest when empty, and interwork for optimum space utilization
- Detached lids snap tight for secure closure
- Manufactured from FDA-compliant materials



Detached Lid Containers			Outside Dimensions (In.)			Bottom Dimensions (In.)						Truck Capacity (with Lids)			
Model No.	Description	Color	L	W	H	L	W	H	Weight lbs.	Weight Capacity lbs.	Vol w Lid Cu. Ft.	Nesting Ratio	Lid Type	53' Truck Stacked	53' Truck Nested
DL2115090201000	Ergonomic Handles/Solid Bottom	FDA Lt. Gray	21.38	15.25	9.56	18.4	13	9.0	3.4	60	1.22	4.3:1	(R)	2,046	5,712
DL2420120201000	Ergonomic Handles/Solid Bottom	FDA Lt. Gray	24	20	12.38	20.5	16.6	11	5.5	100	2.36	5.5:1	(R)	992	4,120
DR2115010001000*	Recessed Lid	FDA Lt. Gray	21.38	15.13	1.13	-	-	-	1.6	-	-	-	-	-	-
DR2420010001000*	Recessed Lid	FDA Lt. Gray	24	20	1.13	-	-	-	2.0	-	-	-	-	-	-

\*Minimum quantities apply, call for details.



akro-mils.com

1293 South Main Street, Akron, Ohio 44301 • Tel: 800.253.2467 • inquiry@akro-mils.com  
 In Canada: Ak-West, Inc. • Tel: 877.979.8940 • Fax: 403.225.1696 • sales@ak-westinc.com • ak-westinc.com